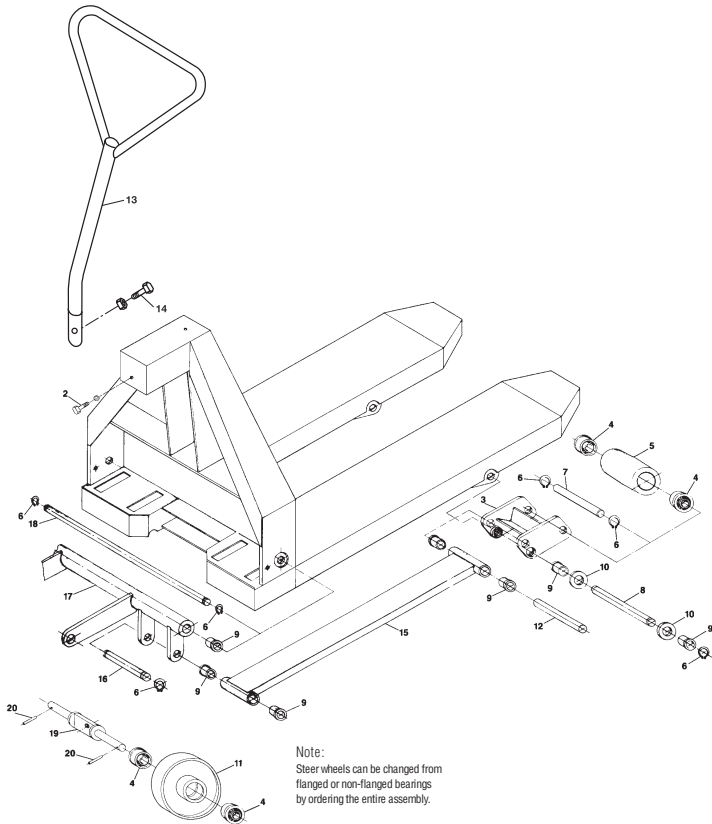
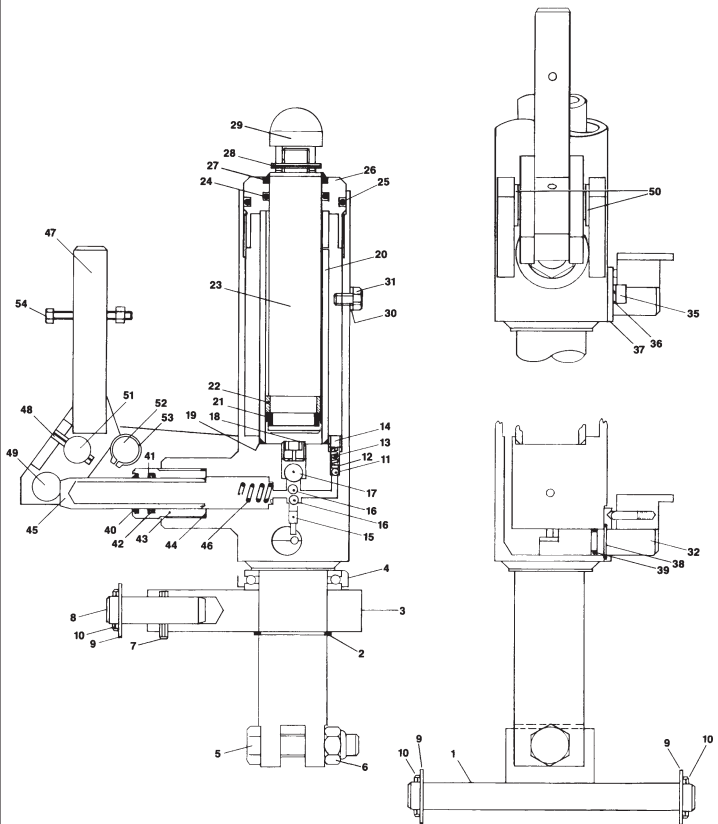


# PALLET JACK PARTS

## Palletmaster HSW Frame



## Palletmaster HSW Hydraulic Unit



### Palletmaster HSW Frame

Item#	Part#	Description
2	00.30	Screw and Washer
3	01.01	Load Roller Bracket with Bushings
4	01.03	Bearing, Newer Style, No Flange
	01.04	Bearing (Older Style, Flanged)
5	01.05-A-D	Load Roller Assembly, Red Ultra Poly On Aluminum Hub W/ Bearings
	01.05-A	Load Roller Assembly, Black Ultra Poly On Steel Hub W/ Bearings
	01.05-N-A	Load Roller Assembly, Nylon W/ Bearings
	01.05-A-FB	Load Roller Assembly, Red Ultra Poly On Aluminum Hub W/ Bearings (Flanged Bearings)
	01.05-FB	Load Roller Assembly, Black Ultra Poly On Steel Hub W/ Bearings (Flanged Bearings)
6	01.07	Snap Ring
7	01.08	Load Roller Axle
8	01.10	Pivot Axle

Item#	Part#	Description
9	01.11	Bushing
10	01.12	Washer
11	01.13-A-HD	Steer Wheel Assembly, Red Ultra Poly On Aluminum Hub W/ Bearings
	01.13-A-ST	Steer Wheel Assembly, Poly On Nylon Hub W/ Bearings
	01.13-N-A	Steer Wheel Assembly, Nylon W/ Bearings
	01.13-A-FB-HD	Steer Wheel Assembly, Red Ultra Poly On Aluminum Hubs W/ Bearings (Flanged Bearings)
12	01.14	Push Rod Axle
13	01.22	Handle
14	01.23	Handle Bolt and Nut
15	03.00	Push Rod, 48" Forks
16	03.07	Pin
17	04.00	Lifting Link, 27" Wide Jack
18	04.04	Lifting Link Shaft, 27" Wide Jack
19	A1	Steer Wheel Axle

Item#	Part#	Description
20	A11	Roll Pin
<b>BRAKE PARTS</b>		
	LB-1	Bushing
	LB-2	Mounting Pin
	LB-3	Snap Ring
	LB-4	Threaded Eyebolt Assembly
	LB-5	Locking Lever Mounting Yoke
	LB-6	Locking Lever
	LB-7	Spring
	LB-8	Shoe Assembly
	LB-8-A	Brake Shoe
	LB-8-B	Hinge Bracket
	LB-8-C	Shoe Spring

### Palletmaster HSW Hydraulic Unit

Item#	Part#	Description
1	A1	Steer Wheel Axle
2	A2	Snap Ring
3	A3	Traverse
4	A4	Traverse Bearing
5	A5	Bolt
6	A6	Nut
7	A7	Roll Pin
8	A8	Pin
9	A9	Washer
10	A11	Roll Pin
11	A L1	Ball
12		Insert (No Longer Needed)
13	A L2	Spring
14	L3	Relief Valve
15	A L4	Release Pin
16	A L5	Ball
17	A L6	Ball
18	L7	Flow Valve
19 A B	L8	O-Ring
20	L9	Sleeve

Item#	Part#	Description
21 A B	L10	U-Cup
22 A	L11	Bushing
23	L12	Ram (Older Style, Serial #00043 & Lower)
	L12A	Ram
24 A B	L13	O-Ring
25 A B	L14	O-Ring
26	L15	Top Nut
27 A B	L16	Scraper
28	L17	Roll Pin
29	L18	Top Pivot (Older Style, Serial #00043 & Lower)
30 A B	L19	Washer
31	L20	Filler Plug
32	F1	Foot Pedal
35	F4	Bolt, 3/8"
	F4-5	Bolt, 5/16"
36	F5	Lock Washer
	F5-5	Lock Washer
37	F6	Detent Plate, 3/8"
	F6-5	Detent Plate, 5/16"
38	F7	Snap Ring

Item#	Part#	Description
39 A B	F8	O-Ring
40 A B	P1	Scraper
41 A B	P2	Back-Up Ring
42 A B	P3	O-Ring
43	P4	Sleeve
44 A B	P5	O-Ring
45 A	P6	Piston
46 A B	P7	Spring
47	P8	Handle Bracket
48	P9	Roll Pin
49	P10	Roller
50 A B	P11	Bushing
51	P12	Pin
52	P13	Stop Shaft
53	P14	Snap Ring
54	01.23	Handle Bolt and Nut
KITS A	HSW-SUPER	Super Seal Kit
KITS B	HSW	Seal Kit
HU HSW		Rebuilt Hydraulic Unit - Exchange